



Naval Facilities Engineering Command, Pacific
 258 Makalapa Drive
 Suite 100
 Pearl Harbor, HI 96860-3134

**MILITARY RELOCATION TO GUAM AND CNMI
 PROGRAMMATIC AGREEMENT (PA) MEMO #1**

Project: P-270, Aviation Combat Element Gym and Dining Facility, Andersen Air Force Base, Guam	Date: October 5, 2018 Comment Period Open Until: November 21, 2018
Project Location: Andersen Air Force Base	Prepared By: NAVFAC Pacific

PROJECT SUMMARY:

This project is for proposed “vertical” construction, to conduct design studies and subsequently build a gym and dining facility at North Ramp, Andersen Air Force Base. The project location previously underwent mitigation for the J-200 “horizontal” project, which included vegetation clearance, grading, cutting/and filling activities. The Area of Potential Effect (APE) for this project is depicted on Figure 1.

Project design efforts include topographical surveys, geotechnical surveys, possible sediments investigations, and possible munitions of explosive concern (MEC) removal. These tasks may require geotechnical borings of varying depths, mechanized excavation, placement of survey markers, and other ground disturbing activities.

Project preparation work includes fine grading, temporary erosion and soil control. Paving and site improvements consist of pavement for roads, parking, driveways, site, and curbs and gutters; concrete masonry block walls for trash enclosures; landscaping; fencing; concrete for sidewalks and ramps, Low Impact Development; pedestrian and bicycle features (bike rack, trash receptacles, facility sign); and infiltration basin. Utilities include electrical power, water (fire protection and potable), communications, sanitary sewer, and storm water drainage systems. Outside area lighting will be installed. The ground improvements will include a drainage system consistent with the Guam Master Plan and the stormwater pollution prevention plan.

Facility components include reinforced concrete such as, exterior walls, flooring, foundation, windows, roofing, mechanical, electrical, and informational systems appropriate to Guam earthquake and environmental conditions, and designed to meet applicable Unified Facility Criteria (UFC).

This project was identified after preparation of the Final Environmental Impact Study (FEIS) for the military relocation to Guam and the Commonwealth of the Northern Mariana Islands (CNMI)

1 This PA Memo is required by Stipulation IV.E.2.a. of the PA as a means for interested members of the public to provide comments on the identification and evaluation of historic properties. Stipulation IV.E.1.b. of the PA requires the DoD to take into account comments received within 45 days of the date of the delivery of this PA memo to the SHPO and public notification via the CRI website.

and Appendix E under various projects of the 2011 Programmatic Agreement (PA). In accordance with Stipulation I.E. of the PA, it is a new project associated with the Guam and CNMI Military Relocation (the Undertaking). This memorandum presents information to allow the Guam State Historic Preservation Officer (SHPO) and the public to provide comments on the identification and evaluation of historic properties and the determination of effect.

PROJECT LOCATION:

The P-270 project is located on AAFB. The base occupies a mostly flat, uplifted limestone plateau in the northern portion of the island of Guam. The majority of the interior of the island is comprised of Mariana Limestone. The project location was previously cleared of vegetation and underwent MEC clearance through the J-200 project.

The total APE for P-270 is 1.29 hectares (3.2 acres).

IDENTIFICATION OF HISTORIC PROPERTIES:

Identification Efforts

In planning for the Undertaking, the Department of Defense (DoD) first conducted a data gap analysis to determine the need for supplemental identification and evaluation surveys and then conducted those surveys. This proposed project was determined to require supplemental identification and evaluation efforts, and the results have been applied to the siting/lay down of the proposed project.

DoD surveys and evaluations have focused on project-specific APEs, defined consistent with 36 CFR §800.16(d) to include those portions of the island of Guam subject to direct and indirect effects of projects included in the Undertaking. Both architectural and archaeological assessments have been completed.

More specifically, the P-270 APE has been subject to one or more of the historic property identification efforts listed in 36 CFR §800.4(b)(1), which may include background research, consultation, oral history interviews, sample field investigation and field survey. As such, results of identification and evaluation efforts in the vicinity of, and including the P-270 APE can be found in the following original studies of cultural and/or historic resources (also, see Figure 2):

Davis, R.

1983 Andersen Air Force Base Central Reconnaissance Survey. Government of Guam
Department of Parks and Recreation. MS on file at Andersen AFB, 36CVS/CVN, Guam.

Dixon et al.

2015 Proposed Guam and CNMI Military Relocation 2012 Roadmap Adjustments SEIS Live-Fire Training Range Complex Range Footprints, Main Cantonment, Utilities, Communications, Well Field Alternatives and Access Route Options, In-Fill Studies. Naval Facilities

-
- 2 | This PA Memo is required by Stipulation IV.E.2.a. of the PA as a means for interested members of the public to provide comments on the identification and evaluation of historic properties. Stipulation IV.E.1.b. of the PA requires the DoD to take into account comments received within 45 days of the date of the delivery of this PA memo to the SHPO and public notification via the CRI website.

Engineering Command, Pacific, Pearl Harbor. (note: GIS labeled as 2014a).

Grant, Marcus, Mikel Travisano, Sherri Wenzlau, Mara Durst

2007 Results of Cultural Resource Inventories for Establishment and Operation of an Intelligence, Surveillance, Reconnaissance, and Strike Capability and the Deployment of Red Horse Squadron Anderson Air Force Base, Guam. Executive Summary prepared for Department of the Air Force, Pacific Air Forces, Hickam Air Force Base, Hawaii. Geo Marine, Inc., Plano, Texas.

Liston, J.

1996 The Legacy of Tarague Embayment and Its Inhabitants, Andersen AFB, Guam. Prepared for 36 CES/CEV, Unit 14007, Environmental Flight, Andersen Air Force Base, Guam. International Archaeological Research Institute, Inc., Honolulu.

Mohlman, G.

2015 Final Report Historic Inventory Survey Andersen Air Force Base, Territory of Guam. Prepared for NAVFAC Marianas by Southeastern Archaeological Research, Inc. March. (Note: GIS labeled as 2013).

Salo, E. and G. Mohlman

2012 Historic American Engineering Record for Andersen Air Force Base, North Field. February.

Tuggle, H.D.

1993 Small and Developed Parcel Survey Areas. Pages 35-42 in *The Archaeology of Orote Peninsula: Phase I and II Archaeological Survey of Areas Proposed for Projects to Accommodate Relocation of Navy Activities from the Philippines to Guam, Mariana Islands*. J. James Carucci. Prepared for Belt Collins and Associates by International Archaeological Research Institute, Inc., Honolulu, HI.

Welch, D.

2010 Archaeological Survey and Cultural Resource Studies Conducted in 2007 on the Island of Guam in Support of the Joint Guam Build-Up Environmental Impact Statement. 2 volumes. Prepared for the Department of the Navy, Pacific Division, Naval Facilities Engineering Command, Pearl Harbor, Hawai'i. International Archaeological Research Institute, Inc., Honolulu.

Yoklavich, A.K. and H.D. Tuggle

2004 Andersen Air Force Base Historic Survey Report. International Archaeological Research

-
- 3** This PA Memo is required by Stipulation IV.E.2.a. of the PA as a means for interested members of the public to provide comments on the identification and evaluation of historic properties. Stipulation IV.E.1.b. of the PA requires the DoD to take into account comments received within 45 days of the date of the delivery of this PA memo to the SHPO and public notification via the CRI website.

Institute, Inc., Honolulu.

No historic properties are extant within the P-270 APE.

A portion of one historic property, a WW II-era runway complex, now essentially a Cold War-era airfield with the 1940s elements adapted for larger and heavier aircraft (B-36, B-47 and B-52), was identified within the proposed location for the J-200 project. The site is significant for its association with Andersen AFB's role as an important strategic and logistical location for the Air Force during the Cold War but was originally constructed to serve as an airfield for B-29 bombers as part of the strategic bombing campaign over Japan during World War II. After the war, the U.S. Air Force took control of the base and used it first as a bomber base for the Far East Air Force (FEAF) and then as the only Strategic Air Command (SAC) bomber base in the Pacific Rim. During the Vietnam Conflict, Andersen's runways supported major B-52 bomber operations against North Vietnam, including Operations ARC LIGHT, BULLET SHOT, and LINEBACKER I and II, a crucial portion of the American strategy during the war.

Following completion of a Historic American Engineering Record (HAER) survey of the entirety of the runway complex in 2012 as mitigation for adverse effects related to MILCON projects P-100 and P-101, and also to address potential adverse effects for future (Defense Policy Review Initiative) DPRI projects within the site's boundaries, the DoD determined it to be eligible for listing in the National Register of Historic Places under Criterion A because of its association with events that have made a significant contribution to the broad patterns of national, state or local history. Draft copies of the HAER survey report were sent to the Guam State Historic Preservation Office (SHPO) and the National Park Service (NPS) for review, with only the NPS providing comments. The final version of the HAER was accepted by the NPS on November 30, 2012.

In accordance with Stipulation VI.F. of the PA, the DoD has retained a full-time Archaeologist to provide site checks, oversee coordination and execution of the archaeological mitigation measures in the PA and to provide quality control. This individual is on-staff at Marine Corps Activity Guam, Public Works Department, and is also designated to respond to and report any inadvertent discoveries to the Signatories, Invited Signatories, and Concurring Parties per Stipulation XII of the PA.

DETERMINATION OF EFFECT:

No historic properties are extant in the APE, as the runway complex was previously mitigated through a separate project. Therefore, the DoD has determined that this project will have no historic properties affected.

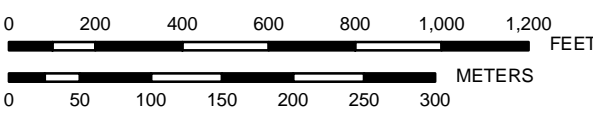
-
- 4 This PA Memo is required by Stipulation IV.E.2.a. of the PA as a means for interested members of the public to provide comments on the identification and evaluation of historic properties. Stipulation IV.E.1.b. of the PA requires the DoD to take into account comments received within 45 days of the date of the delivery of this PA memo to the SHPO and public notification via the CRI website.

FIGURE 1



Source: Esri, DigitalGlobe, GeoEye, IGN, and the GIS User Community

ACE Gym and Dining Area Construction






PREPARED BY:
 Naval Facilities Engineering Command Pacific Division
 Guam Program Management Office

DATE: 26 Sep 2018



Coordinate System: UTM Zone 55 North
 Projection: Transverse Mercator
 Datum: D WGS 1984

Legend

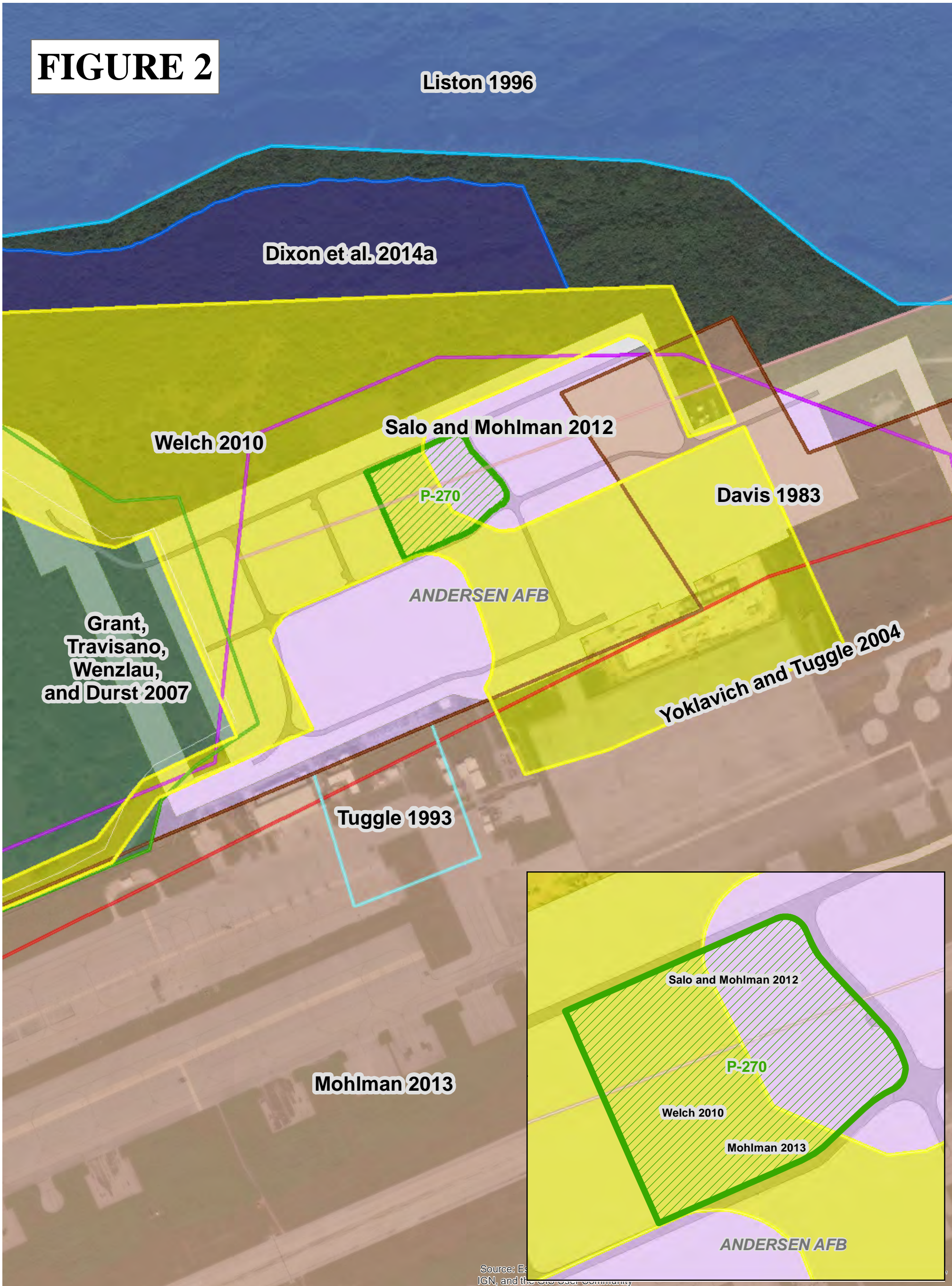
-  P-270 (ACE Gym & Dining) Project Area
-  Paved Roads
-  Military Installations

Total APE Area P-270 = 5.7 Acres



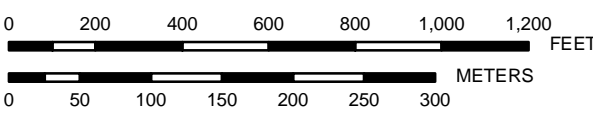
Date: 9/26/2018 Time: 3:49:28 PM Path: C:\Users\laaron.pulliam\Documents\GIS Projects\MXDs\AAAFB\WPA Memo\IP270\WPA MEMO_AAFB_P270 ACE Gym and Dining_GSHPO - Figure 3.mxd

FIGURE 2



Source: Esri, DeLorme, Garmin, IGN, and the GIS User Community

ACE Gym and Dining Area Construction



PREPARED BY:
Naval Facilities Engineering Command Pacific Division
Guam Program Management Office

DATE: 26 Sep



Coordinate System: UTM Zone 55 North
Projection: Transverse Mercator
Datum: D WGS 1984

Legend

- P-270 (ACE Gym & Dining) Project Area
- Paved Roads
- Military Installations
- Liston 1996
- Dixon et al. 2014a
- Grant, Travisano, Wenzlau, and Durst 2007
- Davis 1983
- Salo and Mohlman 2012
- Welch 2010
- Mohlman 2013
- J-200 (North Ramp Utilities) Project Construction Area
- Yoklavich and Tuggle 2004
- Tuggle 1993

Total APE Area P-270 = 5.7 Acres



Date: 9/26/2018 Time: 3:59:43 PM Path: C:\Users\laaron.pulliam\Documents\GIS Projects\MXDs\AAAFB\VIEWPA_Memo\IP270\PA_Memo_AAFB_P270 ACE Gym and Dining_CulturalSurveys - Figure 2.mxd